



IKSEL
DECORATIVE ARTS

•
RW416

Rose Trellis

REPEAT DESIGN
•

DIGITAL CATALOGUE

Rose Trellis

RW416 — Repeat design

STANDARD SIZES

H255 cm 100 $\frac{3}{8}$ "
H275 cm 108 $\frac{1}{4}$ "
H300 cm 118"
H325 cm 128"
H375 cm 147 $\frac{5}{8}$ "

PANEL WIDTH

135 cm (53 $\frac{1}{8}$ ")

HORIZONTAL REPEAT

67,5 cm (26 $\frac{5}{8}$ ")

VERTICAL REPEAT

111 cm (43 $\frac{3}{8}$ ")

NOTE

This design is assorted with our
Rose Trellis Ceiling CE416.

COLORS



cs11 Multicolor

45 cm 17 $\frac{7}{8}$ "



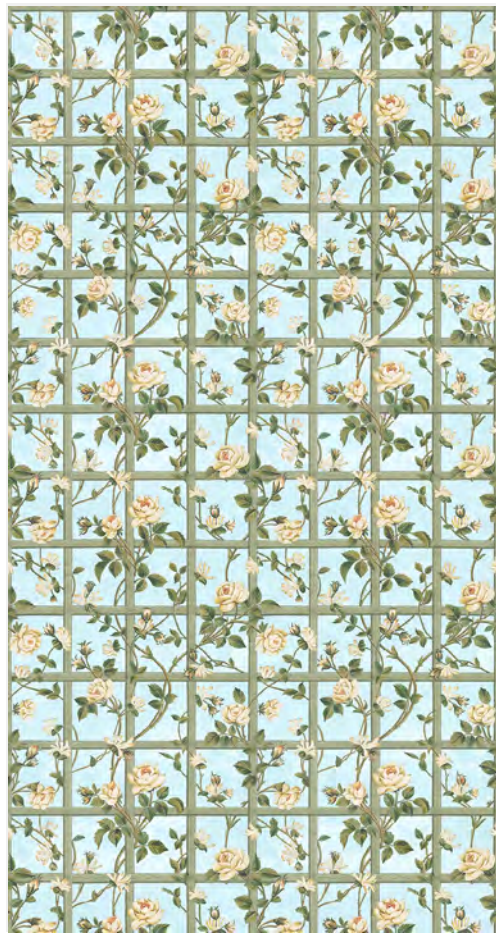
45 cm 17 $\frac{7}{8}$ "



* Available in custom sizes

More options on [iksel.com](https://www.iksel.com)

Standard Sizes



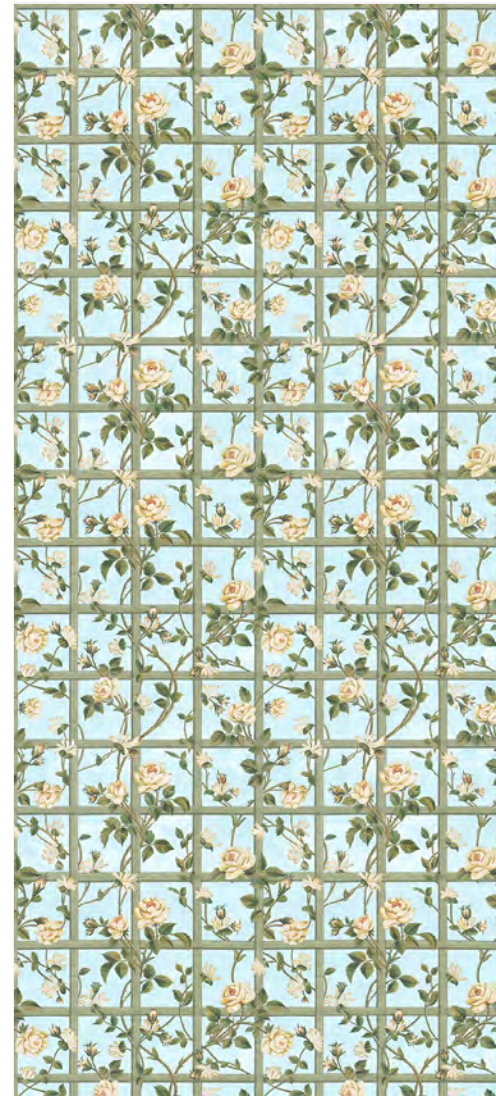
H255

255 x 135 cm
100 ³/₈" x 53 ¹/₈"



H275

275 x 135 cm
108 ¹/₄" x 53 ¹/₈"



H300

300 x 135 cm
118 ¹/₈" x 53 ¹/₈"



H325

325 x 135 cm
127 ¹⁵/₁₆" x 53 ¹/₈"



H375

375 x 135 cm
147 ⁵/₈" x 53 ¹/₈"

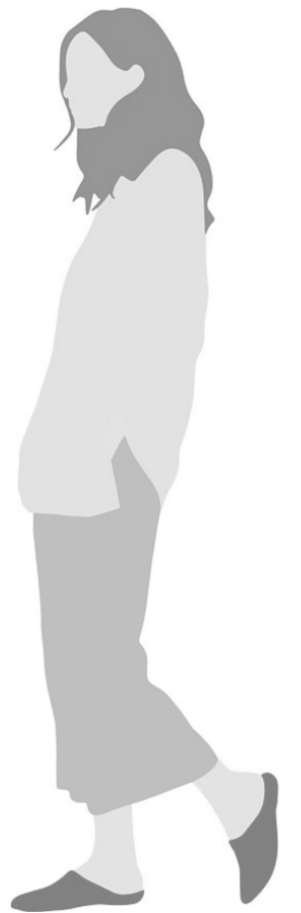
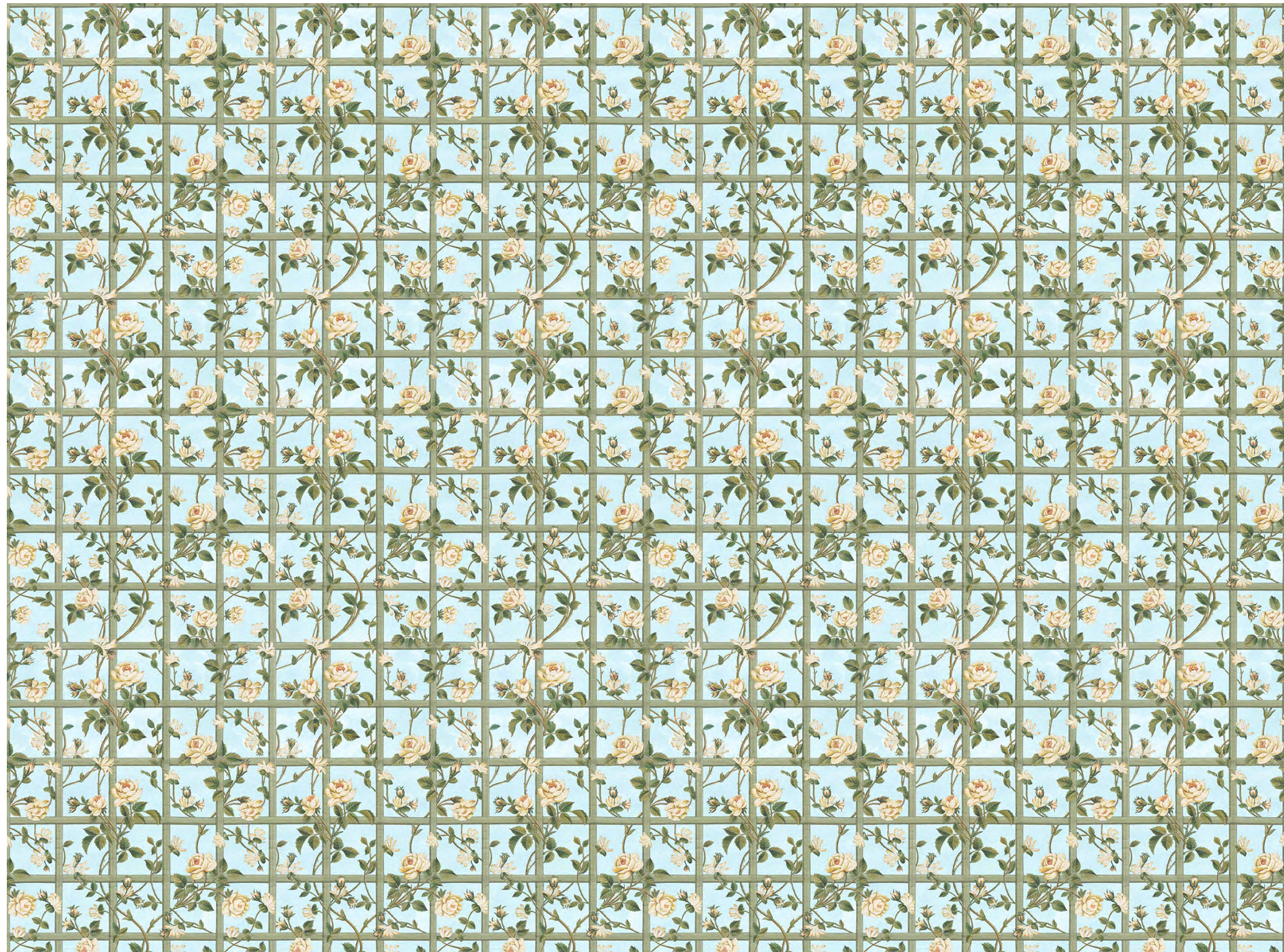


ROSE TRELLIS

RW416 - X01

INDICATIVE SIZE

300 x 405 cm
118 1/8" x 159 1/8"



Color Options



cs11 Multicolor

Rose Trellis

RW416

cs11 Multicolor



Rose trellis presents lush rose bushes growing on a classical green wood trellis over a sky-colored background. This design can be used as a ceiling under reference Rose Trellis CE416.

Collection : European Collection
Theme : -
Assorted Products : CE416 Rose Trellis Ceiling

Width : 135 cm (53 1/8")
V. Repeat : 111 cm (43 5/8")
H. Repeat : 67,5 cm (26 5/8")

Sales Unit : Sold by Panel in 5 standard heights
H255 cm (100 3/8") - H275 cm (108 1/4")
H300 cm (118") - H325 cm (128")
H375 (147 5/8")

Composition : 100% Non Woven (PVC-free / FSC certified)

Weight : 180 gr./sqm

Color fastness to light : Good

Fire retardant : Flame retardant and C-s1, d0 according to European Standard EN 13501-1
ASTM – E84 Class A fire certification

Installation : Standard non-woven WP paste - Paste the wall
Dry Strippable - Dimensionally stable

Notes : Also available printed on Vinyl Coated Wallpaper, Scrubbable Non Woven and Glass Fibre

Color options



cs11 Multicolor

