



IKSEL
DECORATIVE ARTS

•

RF910

Manchu Medallions

FABRIC

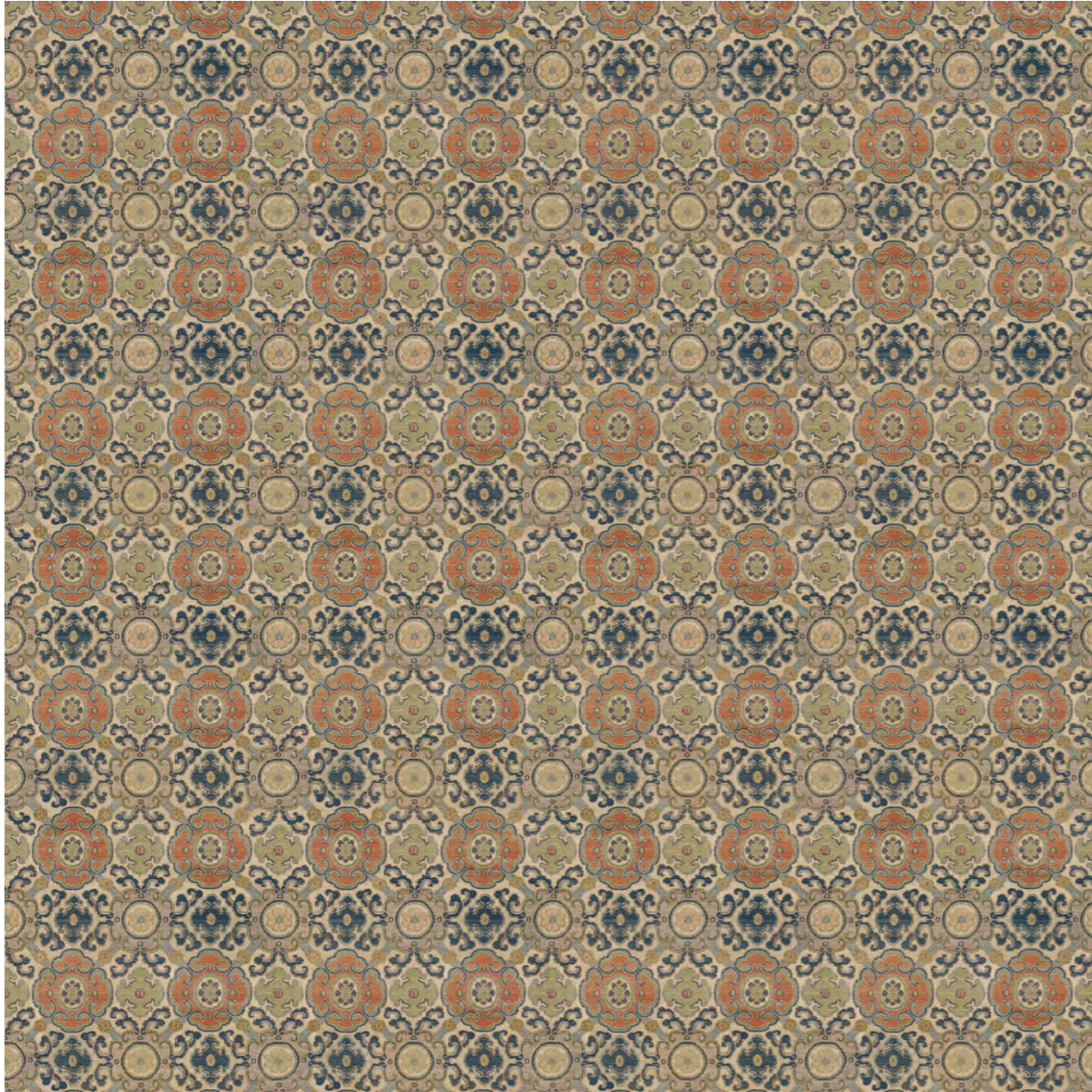
•

DIGITAL MEMO

Manchu Medallions

RF910

cs01 Original



These colorful medallions from 19th cent. China are printed on a soft chenille fabric.

Composition : 50% VI, 29% CO, 21% PL

Width : 131,5 cm (51 6/8")

V. Repeat : 35 cm (13 6/8")

H. Repeat : 32,5 cm (12 6/8")

Weight : 650gr. +/- 5%

Use : Heavy 

Martindale : >70.000

Care :     

Color options



cs01 Original

Collection : Chinese Collection

Theme : -

Coordinated Wallpaper : RW910 Manchu Medallions

Notes :

