



IKSEL

DECORATIVE ARTS

•

RF903B

# Granada Circles L

FABRIC

•

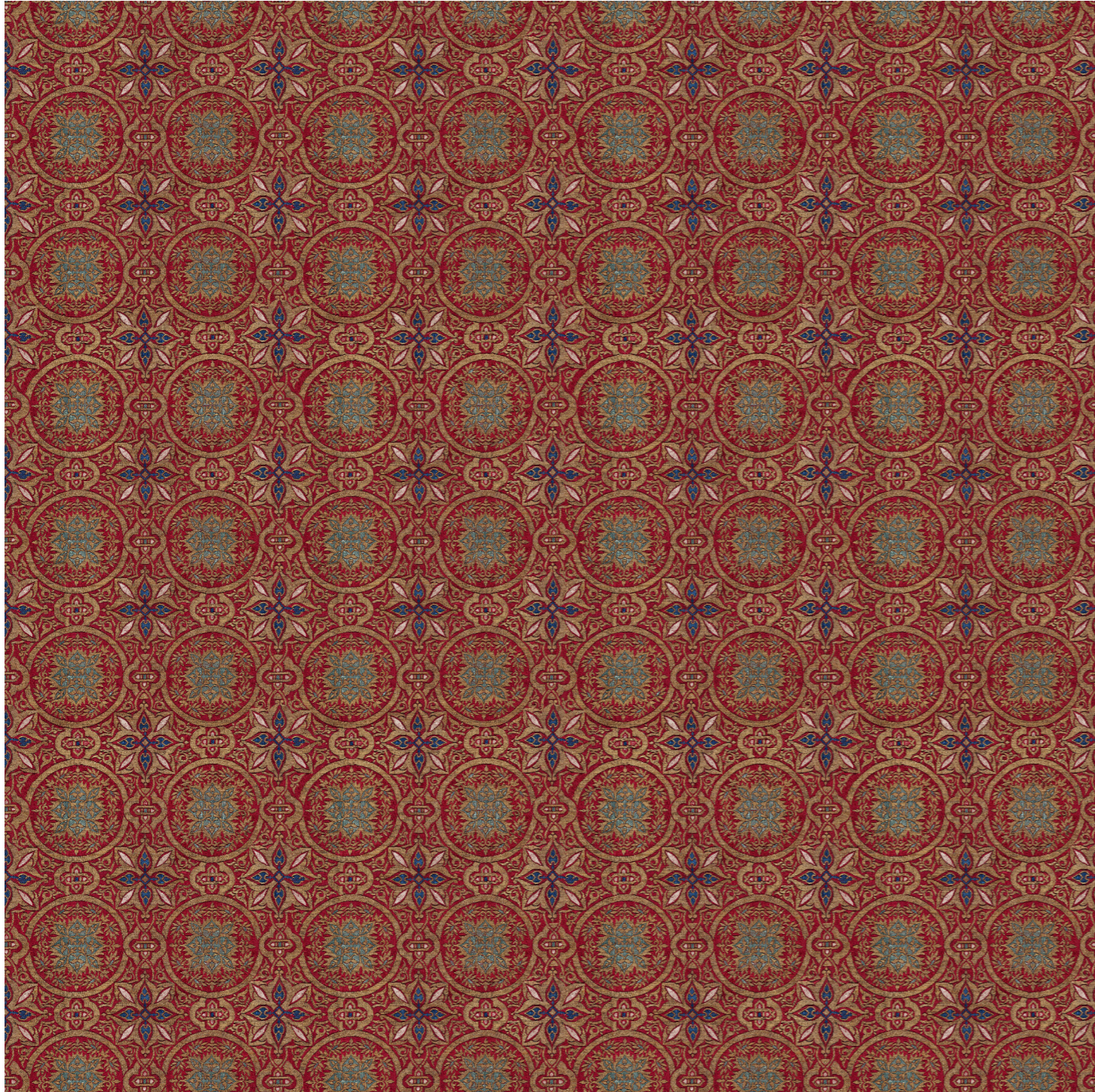
DIGITAL MEMO









# Granada Circles L

RF903B

cs01 Original



Printed on a soft and heavy linen, this pattern composed of circles and stylized flowers in the Hispano-Moresque style, dates back to the Nasrid period (14th cent.).

Composition : 100% Linen  
Width : 135 cm (53 1/8")  
V. Repeat : 48 cm (18 7/8")  
H. Repeat : 33,75 cm (13 2/8")  
Weight : 430gr. +/- 5%  
Use : Normal   
Martindale : 20.000  
Care :     

Color options



cs01 Original

Collection : Antiquity to Renaissance  
Theme : Hispano-Moresque Heritage  
Coordinated Wallpaper : RW903 Granada Circles  
Notes : Also available printed on a chenille fabric under reference RF903A.  
Natural fiber irregularities

